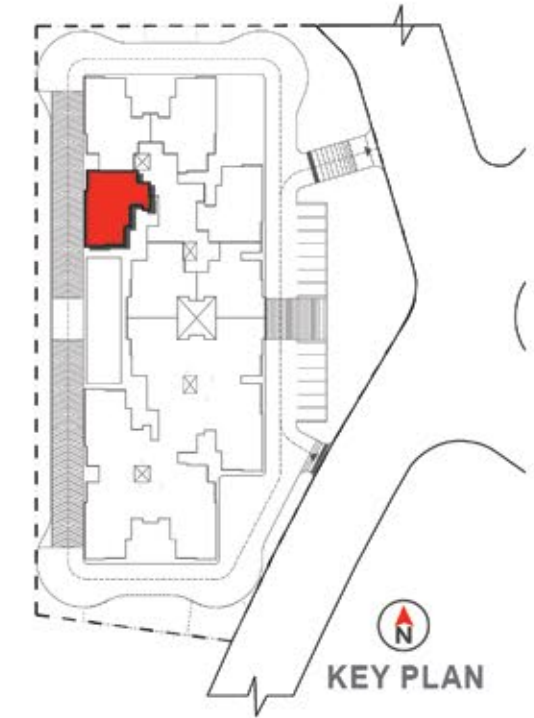


**UNIT TYPE - A1
3-BED (1940 sq. ft.)**

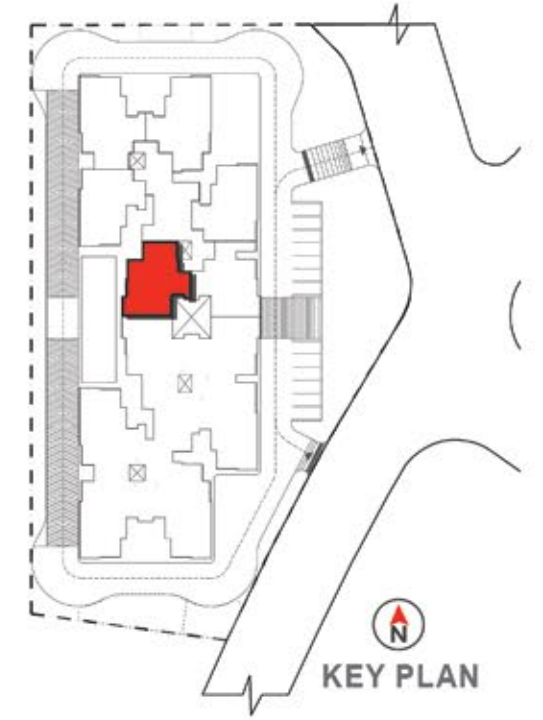


TYPE	UNIT DISTRIBUTION
TYPE A1	A-201 TO 801

SUPER BUILT-UP AREA	UNIT CARPET AREA	BALCONY CARPET AREA
180.24 sq.m / 1940 sq. ft.	117.93 sq.m / 1269 sq. ft.	7.49 sq.m / 81 sq. ft.

DISCLAIMER: The information depicted herein viz., master plans, floor plans, furniture layout, fittings, illustrations, specifications, designs, dimensions, rendered views, colours, amenities and facilities etc., are subject to change without notifications as may be required by the relevant authorities or the developer's architect, and cannot form part of an offer or contract. Whilst every care is taken in providing this information, the Developer cannot be held liable for variations. All illustrations and pictures are artist's impression only. The information are subject to variations, additions, deletions, substitutions and modifications as may be recommended by the company's architect and/or the relevant approving authorities. The Developer is wholly exempt from any liability on account of any claim in this regard. (1 square metre = 10.764 square feet). E & OE. All dimensions and calculations are done in metric system (M/Sq.m), and imperial system (Ft/Sq.ft) shown is for reference only. All dimensions indicated in the drawing are from unfinished surfaces, excluding plaster thickness and tile thickness.

UNIT TYPE - B1
3-BED (1905 sq. ft.)

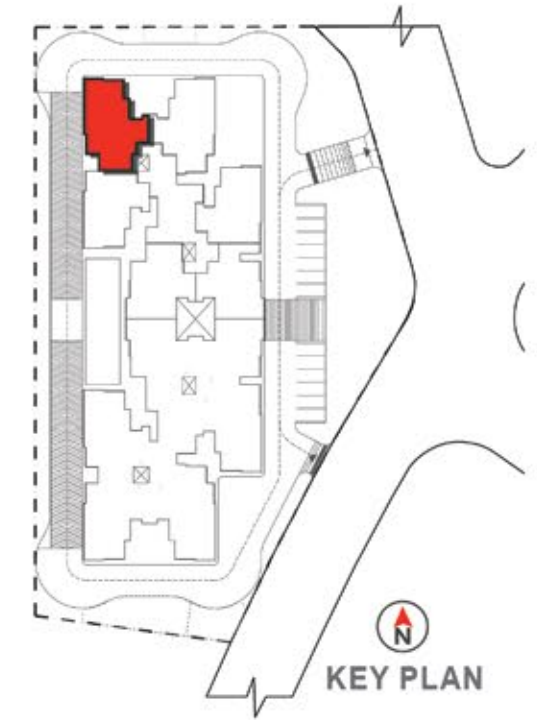


TYPE	UNIT DISTRIBUTION
TYPE B1	A-306 TO 806

SUPER BUILT-UP AREA	UNIT CARPET AREA	BALCONY CARPET AREA
177.01 sq.m / 1905 sq. ft.	115.50 sq.m / 1243 sq. ft.	8.26 sq.m / 89 sq. ft.

DISCLAIMER: The information depicted herein viz., master plans, floor plans, furniture layout, fittings, illustrations, specifications, designs, dimensions, rendered views, colours, amenities and facilities etc., are subject to change without notifications as may be required by the relevant authorities or the developer's architect, and cannot form part of an offer or contract. Whilst every care is taken in providing this information, the Developer cannot be held liable for variations. All illustrations and pictures are artist's impression only. The information are subject to variations, additions, deletions, substitutions and modifications as may be recommended by the company's architect and/or the relevant approving authorities. The Developer is wholly exempt from any liability on account of any claim in this regard. (1 square metre = 10.764 square feet). E & OE. All dimensions and calculations are done in metric system (M/Sq.m), and imperial system (Ft/Sq.ft) shown is for reference only. All dimensions indicated in the drawing are from unfinished surfaces, excluding plaster thickness and tile thickness.

UNIT TYPE - C3
4-BED (2188 sq. ft.)



TYPE	UNIT DISTRIBUTION
TYPE C3	B-211 TO 811

SUPER BUILT-UP AREA	UNIT CARPET AREA	BALCONY CARPET AREA
203.30 sq.m / 2188 sq. ft.	134.58 sq.m / 1449 sq. ft.	7.49 sq.m / 81 sq. ft.

DISCLAIMER: The information depicted herein viz., master plans, floor plans, furniture layout, fittings, illustrations, specifications, designs, dimensions, rendered views, colours, amenities and facilities etc., are subject to change without notifications as may be required by the relevant authorities or the developer's architect, and cannot form part of an offer or contract. Whilst every care is taken in providing this information, the Developer cannot be held liable for variations. All illustrations and pictures are artist's impression only. The information are subject to variations, additions, deletions, substitutions and modifications as may be recommended by the company's architect and/or the relevant approving authorities. The Developer is wholly exempt from any liability on account of any claim in this regard. (1 square metre = 10.764 square feet). E & OE. All dimensions and calculations are done in metric system (M/Sq.m), and imperial system (Ft/Sq.ft) shown is for reference only. All dimensions indicated in the drawing are from unfinished surfaces, excluding plaster thickness and tile thickness.